

The MERCURIUS™

DRUG-SEQ SERVICE



ALITHEA
GENOMICS

Trusted by



Johnson & Johnson



syngenta



Stanford University

IDEAL FOR



**Phenotypic
Screening**



**Compound
Activity
Profiling**



**CRISPR
Screens**



**Cell Response
Screening**

OUR SERVICE

The MERCURIUS™ DRUG-seq service boosts screening efforts based on gene expression profiling by offering a unique RNA-seq procedure that is highly sensitive, extraction-free, massively multiplexed and extremely cost-effective.



Ideal for screening projects

On thousands of samples in parallel and massively multiplexed. Compatible with 96, 384 and 1536 well-plate formats.



Ultra scalable and ultra low-cost

The more samples are processed together, the lower the cost per sample.



Unbiased whole transcriptome screening

No need for prior target selection.



Flexible service

Library prep only or end-to-end service, including cell culture and treatment, Cell Painting, NGS and downstream analysis.

WHAT WE OFFER

A Transformative Tool for High Throughput Toxicology Screening for Environmental and Pharmaceutical Compounds.

PACKAGE 1



MERCURIUS™
**DRUG-seq Library Prep
and NGS**

PACKAGE 2



MERCURIUS™
**Cell Culture & Treatment
+
DRUG-seq Library Prep
and NGS**

PACKAGE 3



MERCURIUS™
**Cell Culture & Treatment
+
Cell Painting
+
DRUG-seq Library Prep
and NGS**

HOW IT WORKS

PACKAGE 1

Client ships frozen plates



PACKAGE 2 & 3

Client defines cell model and treatment



Cell culture and treatment



ALITHEA

PACKAGE 3 ONLY

Cell Painting assay



ALITHEA

Library prep and QC, followed by sequencing

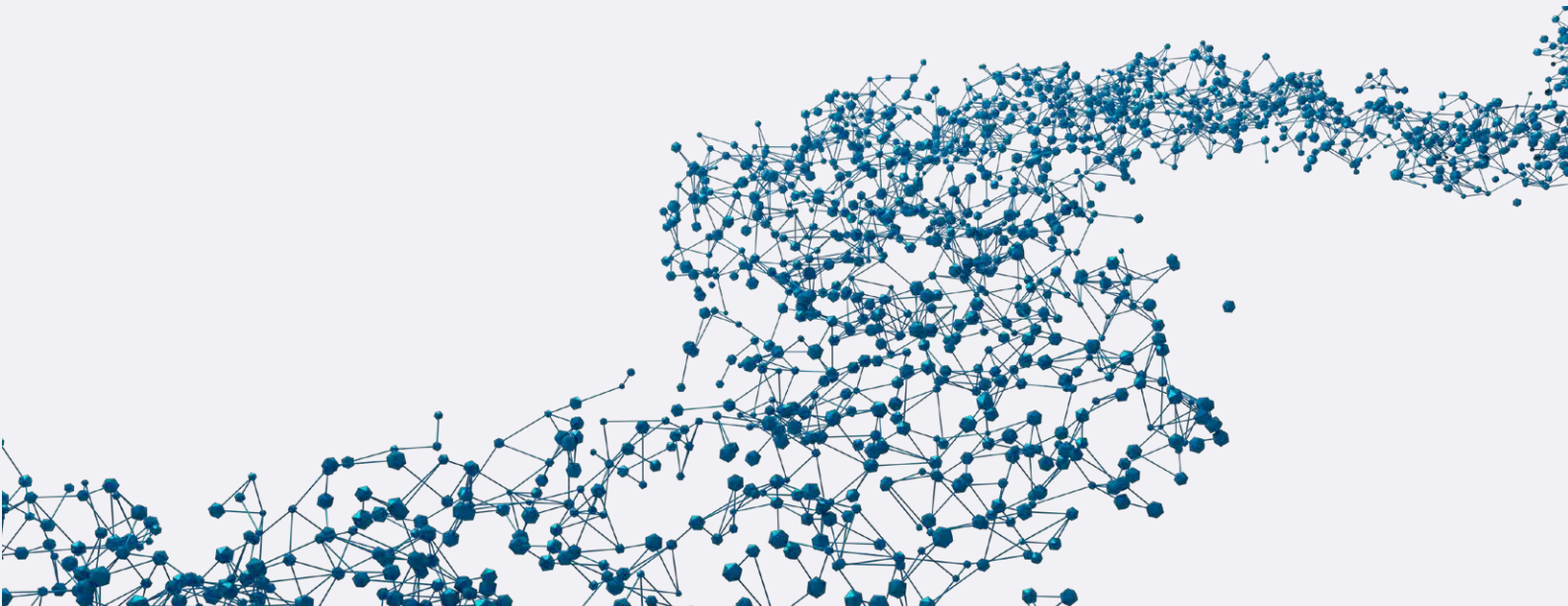


ALITHEA

Downstream data analysis and reporting



ALITHEA



CASE STUDY

Large-scale analysis of synergistic / antagonistic compound combinations effects.

In collaboration with

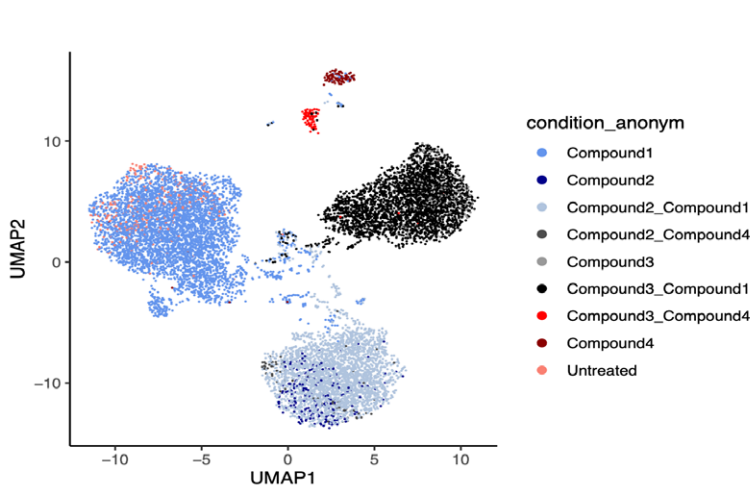
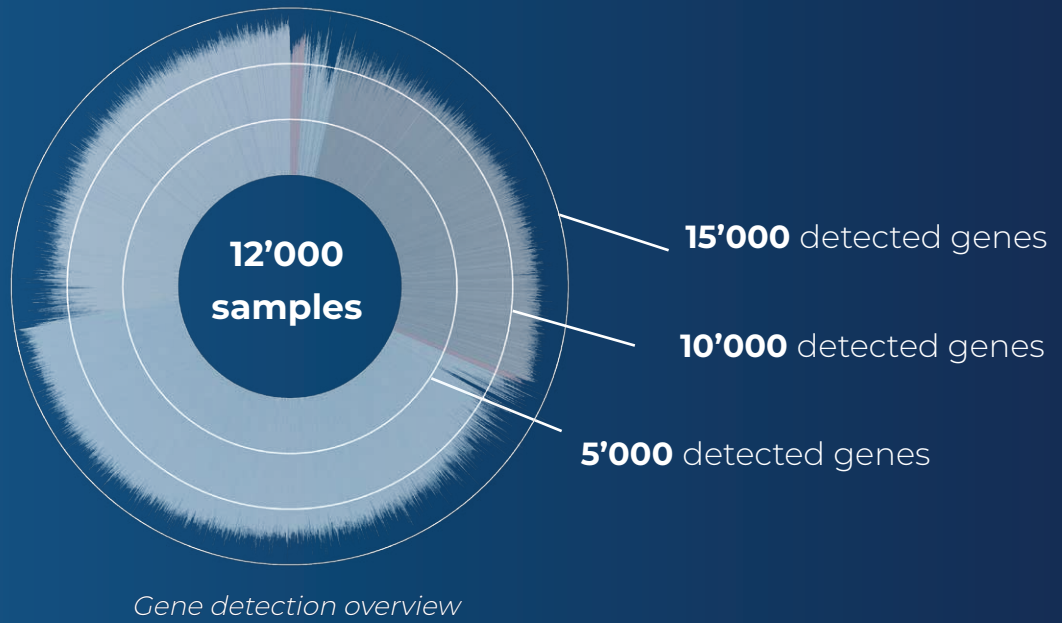


3'840
Compound combinations

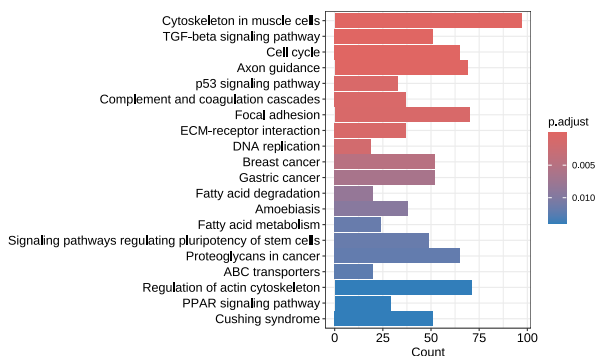
12'000
Samples

12'000
Genes / sample

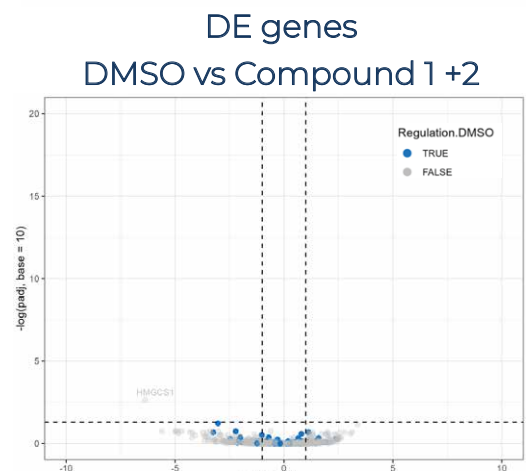
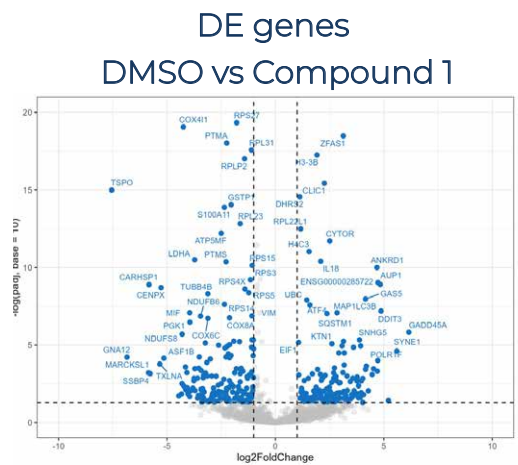
7 days
Samples-to-data



Analysis of top DE genes reveals signature of drug response in combinatorial treatment context.



DRUG-seq enables detailed pathway analysis of biological processes.



DRUG-seq can detect potential synergistic / antagonistic effect of drug combinations.