

ALITHEA  
GENOMICS

# MERCURIUS™

**Human Blood BRB-seq  
Library Preparation kit  
for 96, 384, and 1'536 samples**

PN 10823, 10825, 11023, 11025

---

## **User Guide**

January 2025

FOR RESEARCH USE ONLY | ALITHEAGENOMICS.COM

## Related Products

Kit name	Kit PN	Modules	Module PN
Human Blood BRB-seq Library Preparation 96 kit	10823	Barcoded Oligo-dT Adapters Module 96 samples	10513
		Human Blood RNA Library Preparation and UDI Module 96 samples	10531
Human Blood BRB-seq Library Preparation 384 kit	10825	Barcoded Oligo-dT Adapters Module 384 samples	10515
		Human Blood RNA Library Preparation and UDI Module 384 samples	10533
Human Blood BRB-seq Library Preparation 384 (4x 96) kit	11023	Barcoded Oligo-dT Adapters Module 4x 96 samples	10513
		Human Blood RNA Library Preparation and UDI Module 4x 96 samples	10534
Human Blood BRB-seq Library Preparation 1'536 (4x 384) kit	11025	Barcoded Oligo-dT Adapters Module 4x 384 samples	10515
		Human Blood RNA Library Preparation and UDI Module 4x 384 samples	10535

## Table of Contents

<b>TABLE OF CONTENTS</b> .....	<b>2</b>
<b>KIT COMPONENTS</b> .....	<b>3</b>
Reagents supplied .....	3
Additional required reagents and equipment (supplied by the user).....	4
<b>PROTOCOL OVERVIEW AND TIMING</b> .....	<b>5</b>
<b>PROTOCOL WORKFLOW</b> .....	<b>6</b>
<b>PART 1. PREPARATION OF RNA SAMPLES</b> .....	<b>7</b>
<b>PART 2. LIBRARY PREPARATION PROTOCOL</b> .....	<b>8</b>
2.1. Reverse transcription .....	8
2.2. Sample pooling and column purification .....	9
2.3. Free primer digestion .....	11
2.4. Second strand synthesis .....	12
2.5. Tagmentation .....	13
2.6. Library indexing and amplification.....	14
2.7. Library quality control.....	16
<b>PART 3. LIBRARY SEQUENCING</b> .....	<b>18</b>
3.1. Sequencing with Illumina instruments.....	18
3.2. Sequencing with Element AVITI instrument.....	19
<b>PART 4. SEQUENCING DATA PROCESSING</b> .....	<b>20</b>
4.1. Required software .....	20
4.2. Data processing .....	20
4.2.1. Merging <i>fastq</i> files from individual lanes and/or libraries (Optional) .....	20
4.2.2. Sequencing data quality check.....	21
4.2.3. Preparing the reference genome.....	21
4.2.4. Aligning to the reference genome and generation of count matrices .....	22
4.2.5. Generating the count matrix from .mtx file .....	23
4.2.6. Generating the read count matrix with per-sample stats (Optional) .....	23
4.2.7. Demultiplexing bam files (Optional).....	23
<b>APPENDIX 1. COMPATIBLE ILLUMINA INSTRUMENTS</b> .....	<b>25</b>
<b>CONTACT INFORMATION</b> .....	<b>26</b>

## Kit Components

### Reagents supplied

#### Barcoded Oligo-dT Adapters Set V5 Module

Component Name	Label	Amount provided per kit				Storage
		96 samples (PN 10823)	384 samples (PN 10825)	4x 96 samples (PN 11023)	4x 384 samples (PN 11025)	
Plate with 96 barcoded oligo-dT primers, set V5D (PN 10417)	96 V5D OdT	1 plate	-	4 plates	-	-20°C
Plate with 384 barcoded oligo-dT primers, set V5D (PN 10418)	384 V5D OdT	-	1 plate	-	4 plates	-20°C
Aluminium Seal	-	2 pcs	2 pcs	8 pcs	8 pcs	-20°C/RT

#### Human Blood RNA Library Preparation and UDI Module

Component Name	Label	Cap colour	Volume (µL)				Storage
			96 samples (PN 10531)	384 samples (PN 10533)	4x 96 samples (PN 10534)	4x 384 samples (PN 10535)	
First Strand Enzyme	FSE	magenta	45	170	170	4x 170	-20°C
First Strand Buffer	FSB	magenta	550	1100	2x 1100	4x 1100	-20°C
Exonuclease I Enzyme	EXO	purple	10	10	10	10	-20°C
Exonuclease Buffer	EXB	purple	20	20	20	20	-20°C
Second Strand Enzyme	SSE	orange	20	20	20	20	-20°C
Second Strand Buffer	SSB	orange	45	45	45	45	-20°C
Tagmentation Enzyme	TE	red	12	12	12	12	-20°C
Tagmentation Buffer	TAB	red	40	40	40	40	-20°C
Library Amplification Mix	LAM	green	200	200	200	200	-20°C
UDI Adapter Mix 1	MQ.UDI.1	transparent	10	10	10	10	-20°C
UDI Adapter Mix 2	MQ.UDI.2	transparent	10	10	10	10	-20°C
UDI Adapter Mix 3	MQ.UDI.3	transparent	10	10	10	10	-20°C
UDI Adapter Mix 4	MQ.UDI.4	transparent	10	10	10	10	-20°C
Human Globin Blocker Reagent	hGBR	yellow	230	860	860	4x 860	-20°C

## Additional required reagents and equipment (supplied by the user)

Plasticware	Manufacturer	Product number
15 mL conical tubes	Greiner	188271
0.2 mL 8-Strip Non-Flex PCR Tubes	Starlab	I1402-3700
Zymo-Spin IIICG Columns (optional)	Zymo	C1006-50-G
25 mL reservoir for spin columns	Zymo	C1039-25
Disposable Pipetting Reservoir 25mL polystyrene	Integra	4382
Solution reservoir 150 mL polystyrene (optional)	Integra	6318

Reagents	Manufacturer	Product number
DNA Clean and Concentrator-5 kit	Zymo	D4014
SPRI AMPure Beads	Beckman Coulter	A63881
or		
CleanNA Beads	CleanNA	CNGS0050D
Qubit™ dsDNA HS Assay Kit	Invitrogen	Q32851
High Sensitivity NGS Fragment Analysis Kit	Agilent	DNF-474
SYBR Green	Thermofisher	S7563
Ethanol, 200 proof	-	-
Nuclease-free water	Thermofisher	A57775

Equipment	Manufacturer	Product number
Benchtop centrifuge for plates	-	-
Benchtop centrifuge for 1.5 mL tubes	-	-
Single and Multichannel pipettes	-	-
Fragment Analyser / Bioanalyzer / TapeStation	Agilent	M5310AA
Qubit™	Invitrogen	Q33238
Magnetic stand for 0.2 mL tubes	Permagen	MSR812
Magnetic stand for 1.5 mL tubes	Permagen	MSR06
12-channel pipette, 0.5-12.5 µL VIAFLO or similar	Integra	4631
12-channel pipette, 5-125 µL VIAFLO or similar	Integra	4632
8-channel adjustable tip spacing pipette, VOYAGER, 2 – 50 µL	Integra	4726
Pipetboy	Integra	155 000
Vacuum manifold Qiagen Qiavac 24 Plus or similar	Qiagen	19413
Vacuum pump	-	-
Real-Time PCR Instrument (optional)	-	-
VIAFLO instrument (optional)	Integra	6001
VIAFLO 96/384 channel pipetting head, 0.5-12.5 µL (optional)	Integra	6101/6131

## Protocol Overview and Timing

The MERCURIUS™ Blood BRB-seq kits allow the preparation of Illumina-compatible 3' RNA sequencing libraries for up to 1'536 RNA samples isolated from human blood samples in a time and cost-efficient manner. The kits are provided in the following formats:

Kit format	PN	PCR plate format	Maximum number of samples in one pool	Maximum number of samples processable	Number of UDI libraries
96-sample	10823	96WP	96	96	4
384-sample	10825	384WP	384	384	4
4x 96-sample	11023	96WP	96	384	4
4x 384-sample	11025	384WP	384	1'536	4

Every kit contains barcoded MERCURIUS™ Oligo-dT primers designed to tag RNA samples with individual barcodes during the first strand synthesis reaction, allowing the pooling of the resulting cDNA samples from each experimental group into a single tube for streamlined sequencing library preparation.

Human Globin Blocker Reagent (hGBR) included in the kit contains a set of specific oligonucleotides that anneal to the highly abundant human globin genes transcripts (*HBB*, *HBA1*, and *HBA2*), preventing their reverse transcription and therefore ablating them from the final sequencing library. Being seamlessly implemented in the standard BRB-seq protocol, the Globin Depletions module enables to use total RNA from human blood samples without any prior preparation or treatment.

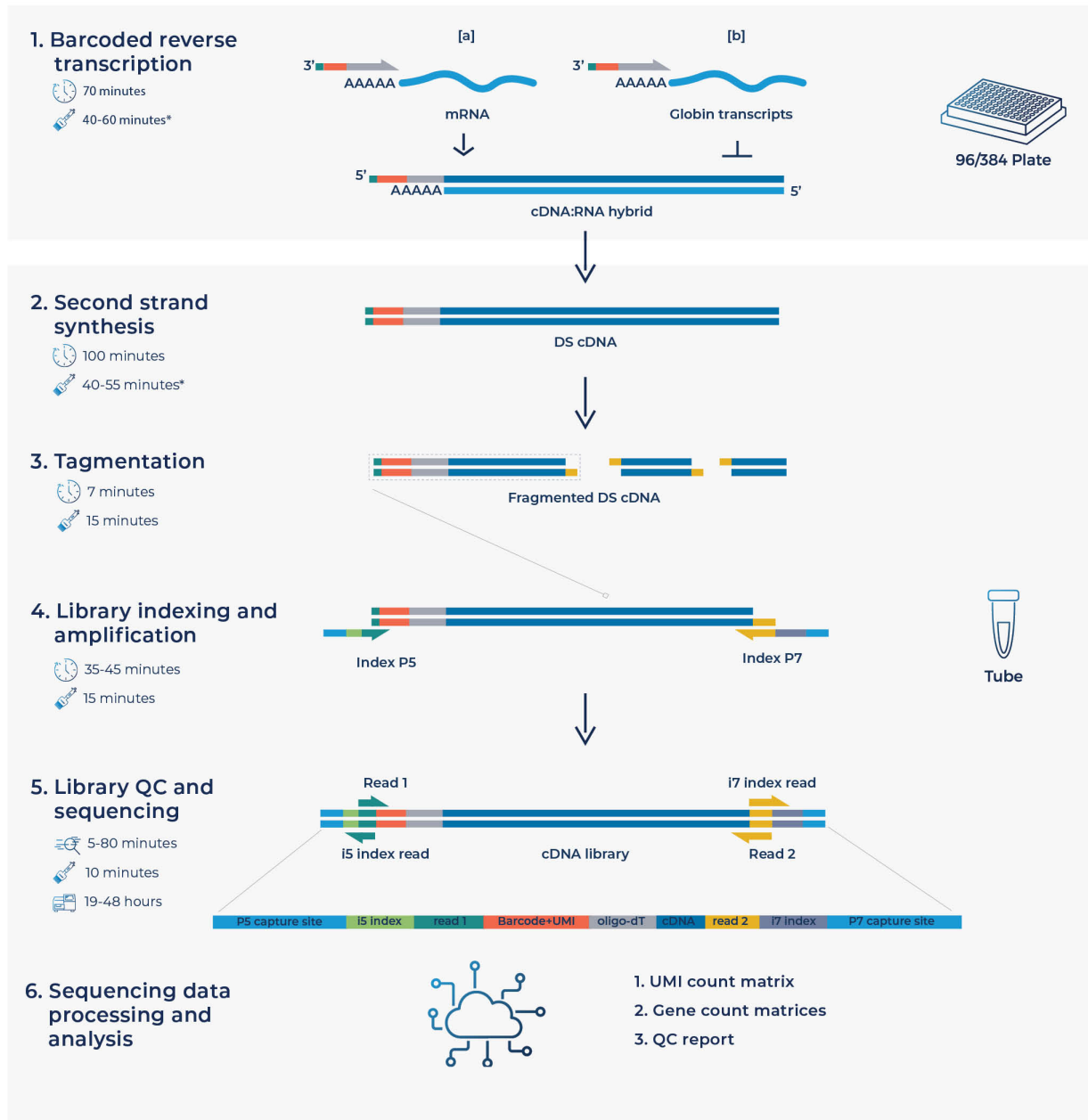
The BRB-seq technology can be used to generate high-quality sequencing data starting with 200 - 1000 ng of total purified human blood RNA per sample. Notably, the kit can be used to pool any number of samples up to the capacity of the provided plate (96 or 384) with two considerations:

- The total RNA amount per pool should be at least 1600 ng.
- Pooling less than eight samples may result in low-complexity reads during sequencing, decreasing the overall sequencing quality. If necessary, the latter can be improved by increasing the proportion of PhiX spike-in control during sequencing (see [Part 3](#)).

Each library indexing is performed using a Unique Dual Indexing (UDI) strategy, which minimizes the risk of barcode misassignment after NGS. The kits contain four UDI adapters. Every adapter can be used to prepare an individual library. Libraries with different UDI adapters can be pooled and sequenced in a single flow cell.

[Figure 1](#) provides an estimation of the time required to accomplish each step of the protocol, assuming that RNA samples have been previously quality-checked and diluted.

# Protocol Workflow



**Overall time**

- Incubation time: 3h30-3h40.
- Hands-on time: 2h-2h35.
- QC time: 5min-1h20 (depending on the instrument used: Qubit or Fragment Analyzer).
- Sequencing time: 19-48 hours (depending on instrument and sequencing run settings).

\* The first provided time is for a 96 well-plate, followed by the time for a 384 well-plate.

**Figure 1 Schematic illustration of protocol workflow**

## Part 1. PREPARATION OF RNA SAMPLES

### Guidelines for RNA samples

The BRB-seq protocol is based on early sample multiplexing, therefore it is critical to ensure the quantity, purity, and quality of RNA is uniform for all samples before starting the library preparation. Individual sample quality checks and adjustments will not be possible after pooling.

#### Quantity

The tested range of total human blood RNA amount per well is 200 – 1000 ng. The recommended starting amount is 500 ng per well for the library, prepared from at least eight wells pooled after RT. Usually, when more RNA is used in the RT reaction, the higher the library complexity is observed after sequencing.

#### Purity

RNA samples extracted using TRIzol™, phenol, or chloroform compounds are prone to residual contamination with organic solvents that may inhibit the reverse transcription reaction. This usually results in low cDNA library yields, loss of sequencing reads for a fraction of pooled samples and uneven read distributions. To ensure the high purity of RNA, assess the 260/230 ratio of at least a few samples from the same RNA isolation batch using a spectrophotometer (i.e., Nanodrop). The 260/230 ratio values should be >1.5.

#### Uniformity

To ensure an even distribution of reads after sequencing, the RNA amount, integrity (RIN number), and 260/230 values of the starting RNA samples must be as uniform as possible, i.e., 500 ng ( $\pm 10\%$ ) of starting material with RIN = 6 for every sample. To obtain such uniform amounts, we therefore recommend to:

- Measure the RNA concentration of all samples with a dye-based method (e.g., Qubit Quant-iT or RiboGreen for large number of samples).
- Dilute samples to obtain the same RNA concentration in all wells ( $\pm 10\%$ ).
- Re-measure the RNA concentration of all samples to confirm uniform concentrations across the samples.
- Ensure 260/230 ratios are >1.5 and similar across the samples.
- Ensure the RIN values are similar across the samples, preferably > 6.

Contact [info@alitheagenomics.com](mailto:info@alitheagenomics.com) for technical support.

## Part 2. LIBRARY PREPARATION PROTOCOL

**NOTE:** Before starting every step, briefly spin down the tubes and plates before opening them to ensure that all liquid or particles are collected at the bottom of the tube/plate.

### 2.1. Reverse transcription

At this step, each RNA sample is reverse-transcribed using the barcoded oligo-dT primers provided in a 96-well (**96WP**) or a 384-well (**384WP**) format, depending on the kit type. Subsequently, all the barcoded samples can be pooled in one tube.

**NOTE:** Barcoded oligo-dT primers are provided lyophilized with the addition of dye. The dye has no impact on the enzymatic reactions and is used solely for better visualization of reaction preparation and pooling.

Despite variations in appearance caused by the drying process, wells may exhibit traces of dried dye ranging from dispersed to solid dots on the bottom. The following addition of RT reagents will enable the visualization of red color, confirming the presence of the oligos in all wells.

#### Preparation

- Thaw the RNA samples on ice.
- Thaw the **FSB** and the **hGBR** reagents at room temperature and mix well before use.
- Briefly spin down the **96WP** or **384WP** plate containing dried oligo-dT primers. This plate will be referred to as the RT plate.
- Prepare Program 1\_RT on the thermocycler (set the lid at 90°C):

Step	Temperature, °C	Time
Incubation	42	50 min
Inactivation	70	10 min
Keep	4	pause

**NOTE:** All the manipulations with RNA and RT enzyme should be performed in an RNase-free environment, using RNase-free consumables and filter tips, on ice, and using gloves.

#### Procedure for **96WP** and **384WP**

**NOTE:** For the 96-well plate format, if only a portion of the plate is used, we recommend reconstituting the oligos in 5 µL of water. Pipette 10-15 times and gently transfer 4.6 µL to the new plate where the RT will be performed. Do not add water to the Master Mix for the RT reaction (as indicated in step 2.1.5 below).

For the 384-well plate format, the volume for oligo reconstitution will depend on the sample volumes, and no additional water should be introduced into the master mix.

Before opening the seal, it is advisable to centrifuge the oligo plate, and **only the wells intended for use should be opened**. The seal must remain on the plate to prevent any potential cross-contamination.

- 2.1.1. Keep the RT plate on ice. Using a multichannel pipette, transfer the following volume of purified RNA directly to the corresponding wells and pipette 3-5 times to ensure proper reconstitution of dried oligo-dT:
  - **96WP:** 8 µL.
  - **384WP:** 5 µL.
- 2.1.2. Add 2 µL of **hGBR** to each well (either **96WP** or **384WP**) containing RNA and barcodes.
- 2.1.3. Carefully re-seal the RT plate, briefly spin it in the centrifuge and place it in the thermocycler at 70°C for 10 min.
- 2.1.4. Immediately put on ice.
- 2.1.5. Prepare the Master Mix for the RT reaction (+10%) as follows:

Reagent	96WP, µL		384WP, µL	
	Per well	96 wells +10%	Per well	384 wells +10%
<b>FSB</b>	5.0	528.0	2.6	1100.0
<b>FSE</b>	0.4	42.2	0.4	169.0
<b>Water</b>	4.6	485.8	-	-



TOTAL	10.0	1056.0	3.0	1269.0
2.1.6.	Keep the RT plate on ice and, using a multichannel pipette, transfer the following volume of Master Mix to each well containing the RNA sample:			
	<ul style="list-style-type: none"> <li>■ <b>96WP</b>: 10 <math>\mu</math>L.</li> <li>■ <b>384WP</b>: 3 <math>\mu</math>L.</li> </ul>			
2.1.7.	Carefully re-seal the RT plate and briefly spin it in the centrifuge.			
2.1.8.	Transfer the plate to the thermocycler and start <b>Program 1_RT</b> .			
<b>Safe stop:</b> After this step, the RT plate can be kept at 4°C overnight.				

## 2.2. Sample pooling and column purification

After pooling, the barcoded RT samples can be purified using either column-based Zymo Clean & Concentration Kit (Zymo, D4014) or SPRI magnetic beads (Beckman, A63881). Both approaches produce comparable outcomes and can be used interchangeably. Depending on the availability of 3<sup>rd</sup> party reagents and instruments, the corresponding method should be applied.

### NOTE: Library normalization

The volume used for pooling from each well can be adjusted to re-equilibrate the proportion of samples in the pool, helping to improve the distribution of sequencing reads in the library, especially if some samples risk obtaining too many reads.

Shallow sequencing allows for assessing the coverage per sample unequivocally. For this approach, we recommend pooling only a fraction of the RT volume from each well (i.e., 5  $\mu$ L out of 20  $\mu$ L) for the library preparation. After the library QC by sequencing (see section 2.7), the volume used for pooling can be re-adjusted to reduce the variation at the sequencing stage.

### The procedure of cDNA purification using the column-based method

After the cDNA from each well is pooled in a reservoir, mix it with a 7x volume of DNA binding buffer (Zymo, D4004-1-L). We strongly recommend using a vacuum manifold for the cDNA purification to avoid column membrane damage due to multiple centrifugation rounds. Note that a high-capacity Zymo-Spin IIICG column (Zymo, C1006-50-G) is required to purify large volumes resulting from 384 sample pooling.

Plasticware			Pooling volumes				TOTAL	
Plate format	Pipetting strategy	Zymo-Spin column type	First strand cDNA		DNA Binding Buffer		Per well, $\mu$ L	Per plate, mL
			Per well, $\mu$ L	Per plate, mL	Per well, $\mu$ L	Per plate, mL		
<b>96WP</b>	multichannel pipette or pipetting robot	I (#D4014)	20	<b>1.92</b>	140	<b>13.44</b>	160	<b>15.36</b>
<b>384WP</b>	pipetting robot	IIICG (C1006-50-G)	10	<b>3.84</b>	70	<b>26.88</b>	80	<b>30.72</b>

**Table 1** Overview of the recommended pipetting strategy, plasticware, and reagent volumes to be used depending on the number of pooled samples

### Preparation

- Make sure Zymo DNA Wash buffer has Ethanol added.

### Procedure

- 2.2.1. According to **Table 1**, use a multichannel pipette, or pipetting robot, to transfer the entire RT volume (20  $\mu$ L for **96WP**, 10  $\mu$ L for **384WP**) of each sample into a specific reservoir (25 mL or 100 mL).
- 2.2.2. Mix the pool well and transfer it to the falcon tube with a pipette.
- 2.2.3. Add a volume of 7x DNA Binding buffer according to the combined volume of the RT (**Table 1**). The color of the mix should turn yellow.
- 2.2.4. Connect the 25 mL funnel (Zymo, C1039-25) to a Zymo column suitable for purification volume (**Table 1**) and place it on a vacuum manifold.

- 2.2.5. Gently mix the cDNA in the binding buffer mixture and transfer it to a 25 mL funnel using a pipetboy.
- 2.2.6. Turn on the vacuum pump and let the liquid pass through the column.
- 2.2.7. Transfer any remaining volume to the funnel. Do not let the membrane overdry.
- 2.2.8. After the entire pool mix has passed through the column, add 200  $\mu\text{L}$  of DNA Wash buffer (with Ethanol added) directly to the membrane of the column.
- 2.2.9. Repeat step 2.2.8 once the wash buffer passed through the filter.
- 2.2.10. Remove the column from the vacuum manifold, put it in a 1.5ml tube, and centrifuge for 1 min to remove leftovers from the washing buffer.
- 2.2.11. Depending on the Zymo-Spin column type used, perform the following:
  - For the type **I** column used with  $\leq 96$  samples (**96WP**), add 20  $\mu\text{L}$  of water to the column matrix, and incubate for 1 min.
  - For the type **IIICG** column used with 384 samples (**384WP**), add 38  $\mu\text{L}$  of water to the column matrix, and incubate for 1 min.
- 2.2.12. Transfer the column into a new labelled 1.5 mL tube and centrifuge 30 sec.
- 2.2.13. Immediately proceed to step 2.3.

### The procedure of cDNA purification using the SPRI bead-based method

Perform cDNA purification with SPRI magnetic beads using using a 1:1 ratio of cDNA pool and beads slurry. The purification of large volumes (i.e., 2 mL of the pool from **96WP** and 4 mL from **384WP**) requires three to six 1.5 mL tubes and a corresponding magnetic stand (Permagen, MSR06).

If the volume of the pool is higher than 750  $\mu\text{L}$ , split it equally in the required number of 1.5 mL tubes and add the identical volume of beads (i.e., a pool of 1 mL split in 2 tubes with 500  $\mu\text{L}$  per tube and add 500 $\mu\text{L}$  of beads per tube).

#### Preparation

Pre-warm beads at room temperature and vortex them vigorously before pipetting.

- 2.2.14. Pool the RT samples as described in Table 1.
- 2.2.15. Transfer the collected pool to a 2 mL or 15 mL tube, depending on the pooled volume. Consider that the final volume will be twice higher due to the addition of the beads.
- 2.2.16. Add pre-warmed beads in a 1:1 ratio (i.e., for 960  $\mu\text{L}$  of pooled samples, add 960  $\mu\text{L}$  of beads slurry), and mix by pipetting up and down ten times.
- 2.2.17. Incubate for 5 min at room temperature.
- 2.2.18. Place the tube on the magnetic stand, wait 5 min, and carefully remove and discard the supernatant.
- 2.2.19. To wash the beads, pipette 1 mL of freshly prepared 80% ethanol into the tube.
- 2.2.20. Incubate for 30 sec.
- 2.2.21. Carefully remove the ethanol without touching the bead pellet.
- 2.2.22. Repeat step 2.2.19 for a total of two washes.
- 2.2.23. Remove the tube from the magnetic stand and let the beads dry for 1-2 min.
- 2.2.24. Resuspend the beads in 37  $\mu\text{L}$  of water and incubate for 1 min.
- 2.2.25. Place tubes on the magnetic stand, wait 5 min, and carefully transfer 35  $\mu\text{L}$  of supernatant to a new tube to avoid bead carry-over.
- 2.2.26. Immediately proceed to step 2.3.

If the RT pool was split into several tubes at step 2.2.15, use one of the following options:

- **[Two tubes only]**, resuspend the beads in **both tubes** in 20  $\mu\text{L}$ /tube, and combine both elutions in one tube;
- **[Two or more tubes]**, resuspend the beads in the **first tube** in 40  $\mu\text{L}$  of water. Keep other tubes closed to avoid over-drying of the beads. Transfer obtained elution to the next tube and resuspend beads. Repeat this step for every tube;

- **[Two or more tubes]**, resuspend **every** tube in 37  $\mu\text{L}$ . Combine all elutions in one tube and perform one additional purification of the pool adding beads slurry accordingly to the pool volume (steps 2.2.16 - 2.2.25). Elute in 37  $\mu\text{L}$  of water and collect 35  $\mu\text{L}$  in a new tube.

## 2.3. Free primer digestion

It is recommended to perform non-incorporated primer digestion immediately after pooling.

### Preparation

- Label 0.2 mL PCR tubes corresponding to the number of pools prepared.
- Thaw the **EXB** reagent at room temperature.
- Keep the **EXO** reagent on ice.
- Prepare program 2\_FPD on the thermocycler (set the lid at 90°C):

Step	Temperature, °C	Time
Incubation	37	30 min
Incubation	80	20 min
Keep	4	pause

### Procedure

- 2.3.1. Depending on the cDNA volume, obtained from steps 2.2.13 or 2.2.25, transfer 17  $\mu\text{L}$  or 35  $\mu\text{L}$  of the eluate into a new labeled 0.2 mL PCR tube.
- 2.3.2. Prepare the EXO reaction mix as follows (with 10% excess):

Reagent	Per reaction ( $\mu\text{L}$ )	
	For 17 $\mu\text{L}$ elution	For 35 $\mu\text{L}$ elution
<b>EXB</b>	2.0	4.0
<b>EXO</b>	1.0	1.0
<b>TOTAL</b>	3.0	5.0

- 2.3.3. According to the table, transfer **3  $\mu\text{L}$**  or **5  $\mu\text{L}$**  of EXO reaction mix into each PCR tube with purified cDNA.
- 2.3.4. Mix by pipetting up and down 5 times.
- 2.3.5. Briefly spin down in the bench-top centrifuge
- 2.3.6. Incubate in the thermocycler Program 2\_FPD.
- 2.3.7. Proceed immediately to step 2.4 or keep the tube at 4°C overnight.

**Safe stop:** After this step, the tube(s) can be kept at 4°C overnight.

## 2.4. Second strand synthesis

At this step, double-stranded full-length cDNA is generated and purified using magnetic beads.

### Preparation

- Pre-warm the SPRI beads at room temperature for ~30 min.
- Prepare 5 mL of 80% ethanol.
- Thaw the **SSB** reagent at room temperature and mix well before use.
- Keep the **SSE** reagent constantly on ice.
- Prepare program **3\_SSS** on the thermocycler (set the lid at 70°C):

Step	Temperature, °C	Time
Incubation	37	20 min
Incubation	65	30 min
Keep	4	pause

### Procedure

- 2.4.1. Prepare the SSS reaction mix for the second strand synthesis as follows (with 10% excess):

Reagent	Per reaction (µL)	
	For 17 µL elution	For 35 µL elution
<b>SSB</b>	5.0	7.0
<b>SSE</b>	2.0	3.0
<b>TOTAL</b>	7.0	10.0

- 2.4.2. Transfer **7 µL** or **10 µL** of SSS reaction mix to the tube from step **2.3.7** and mix well by pipetting up and down 5 times.
- 2.4.3. Incubate in thermocycler **Program 3\_SSS**.
- 2.4.4. Proceed immediately to step **2.4.5**.

### cDNA clean-up with SPRI beads

Perform the double-stranded cDNA purification with SPRI magnetic beads using a 0.6x ratio (i.e., 30 µL of bead slurry plus 50 µL of cDNA).

**NOTE:** Use pre-warmed beads and vortex them vigorously before pipetting.

- 2.4.5. Complement the final volume to 50 µL with water.
- 2.4.6. Add 30 µL of beads and mix by pipetting up and down 10 times.
- 2.4.7. Incubate for 5 min at room temperature.
- 2.4.8. Place the tube on the magnetic stand, wait 5 min, and carefully remove and discard the supernatant.
- 2.4.9. To wash the beads, pipette 200 µL of freshly prepared 80% ethanol into the tube.
- 2.4.10. Incubate for 30 sec.
- 2.4.11. Carefully remove the ethanol without touching the bead pellet.
- 2.4.12. Repeat step **2.4.9** for a total of two washes.
- 2.4.13. Remove the tube from the magnetic stand and let the beads dry for 1-2 min.
- 2.4.14. Resuspend the beads in 21 µL of water.
- 2.4.15. Incubate for 1 min.
- 2.4.16. Place the tube on the magnetic stand, wait 5 min, and carefully transfer 20 µL of supernatant into a new tube to avoid bead carry-over.
- 2.4.17. Use 2 µL to measure the concentration with Qubit.

**Safe stop:** At this step, the cDNA can be safely kept at -20°C for a few weeks.

## 2.5. Tagmentation

At this step, the full-length cDNA is tagmented using a Tn5 transposase pre-loaded with adapters for library amplification. When possible, it is recommended to use 20 ng of cDNA for tagmentation to obtain a higher library complexity with less PCR amplification.

### Preparation

- Pre-warm the SPRI beads at room temperature for ~30 min.
- If needed, prepare fresh 5 mL of 80% ethanol.
- Thaw the **TAB** reagent at room temperature and mix well before use.
- Keep the **TE** reagent constantly on ice.
- Set the PCR machine at 55°C incubation.

### Procedure

- 2.5.1. Prepare the Tagmentation mix on ice in a PCR tube. If several cDNA samples are tagmented, prepare the Master mix as follows (with 10% excess):

Reagent	Per reaction (µL), for cDNA inputs		
	≤ 9 ng	10-14 ng	15-20 ng
<b>TAB</b>	4.0	4.0	4.0
<b>TE</b>	1.0	2.0	3.0
<b>cDNA</b>	X µL	X µL	X µL
<b>Water</b>	15.0 – X	14.0 – X	13.0 – X
<b>TOTAL</b>	20.0	20.0	20.0

- 2.5.2. Keep the mix on ice and pipette up and down 10 times with the pipette set at 5 µL. Pay attention to mixing the reaction volume thoroughly.
- 2.5.3. Incubate for 7 min at 55°C in the PCR machine.
- 2.5.4. Immediately put the tube on ice and add 30 µL of water for the final volume of 50 µL.

### Tagmented cDNA clean-up with SPRI beads

Purify the tagmented cDNA with SPRI magnetic beads using a 0.6x ratio.

**NOTE:** Use pre-warmed beads and vortex them vigorously before pipetting.

- 2.5.5. Add 30 µL of beads to 50 µL of tagmented cDNA and mix by pipetting up and down 10 times.
- 2.5.6. Incubate for 5 min at room temperature.
- 2.5.7. Place the tubes on the magnetic stand, wait 5 min, carefully remove and discard the supernatant.
- 2.5.8. To wash the beads, pipette 200 µL of freshly prepared 80% ethanol into the tube.
- 2.5.9. Incubate for 30 sec.
- 2.5.10. Carefully remove the ethanol without touching the bead pellet.
- 2.5.11. Repeat steps 2.5.8 - 2.5.10 for a total of two washes.
- 2.5.12. Remove the tube from the magnetic stand and let the beads dry for 1-2 minutes.
- 2.5.13. Resuspend the beads in 21 µL of water.
- 2.5.14. Incubate for 1 min.
- 2.5.15. Place the tube on the magnetic stand, wait 5 min and carefully transfer 20 µL of the supernatant into a new tube to avoid bead carry-over.
- 2.5.16. Proceed immediately to step 2.6.

## 2.6. Library indexing and amplification

At this step, 5' terminal fragments are amplified using the Unique Dual Indexing (UDI) adapter primers. The kit contains 4 Illumina-compatible primer pairs to generate the UDI libraries. The index sequences are indicated in [Table 4](#).

The number of amplification cycles required for library preparation typically ranges from 12 to 17. The precise number may depend on the RNA samples and the input cDNA amount used for fragmentation. To determine the optimal number of cycles, follow the Library quantification protocol below.

It is strongly recommended to perform the final library clean-up step twice to effectively remove primer dimer fragments.

### Preparation

- Pre-warm the SPRI beads at room temperature for ~30 mins.
- Prepare 10 mL of 80% ethanol.
- Thaw the **LAM** reagent on ice and mix well before use.
- Thaw the required number of **MQ.UDI Adapters** at room temperature and briefly spin before use.
- Prepare the Program 4\_TN5AMP (set the lid at 100°C) on the thermocycler (\*The exact number of PCR cycles should be determined following the Library quantification protocol below)

Step	Temperature, °C	Time	Cycles
Initial denaturation	98	1 min	
Denaturation	98	10 sec	
Annealing	63	30 sec	15 or TBD*
Extension	72	1 min	
Final extension	72	3 min	
Keep	4	pause	

### Procedure

2.6.1. Prepare the PCR amplification reaction as follow:

Reagent	Per reaction (µL)
<b>LAM</b>	25.0
<b>MQ.UDI Adapter</b>	5.0
<b>Tagmented cDNA</b>	20.0
<b>TOTAL</b>	50.0

2.6.2. Pipette up and down 5 times.

2.6.3. Put the tube in the PCR machine and do one of the following:

- Determine the optimal number of amplification cycles using real-time PCR (highly recommended; follow steps 2.6.5 - 2.6.12); or
- start Program 4\_TN5AMP with the default 15 PCR cycles (less preferable).

2.6.4. After the PCR is done, proceed to the library bead clean-up ([2.6.13](#)).

2.6.5. In the case of the cycle number optimization, perform 5 cycles of library preamplification (Program 4\_TN5AMP).

2.6.6. Place the tube on ice.

2.6.7. Use a 5 µL aliquot from the PCR reaction to prepare a qPCR reaction mix in the appropriate PCR tube or plate as follows:

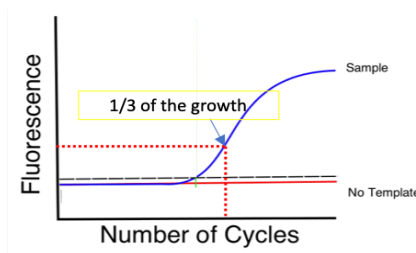
Reagent	Per reaction, µL
<b>5 cycles pre-amplified library</b>	5.0
<b>SYBR 100x*</b>	0.1
<b>LAM</b>	2.5
<b>Water</b>	2.4
<b>TOTAL</b>	10.0

2.6.8. Place the tube in the qPCR machine and run with the following program:

Step	Temperature	Time	Cycles
Initial denaturation	98°C	1 min	
Denaturation	98°C	10 sec	
Annealing	63°C	30 sec	25
Extension + acquisition	72°C	1 min	

2.6.9. Determine the cycle number depending on the growth curve in the multicomponent plot, as in Figure 2.

**Figure 2** Determination of the additional number of amplification cycles with qPCR



2.6.10. Place the tube containing the remaining 45  $\mu$ L of the pre-amplified library in the PCR machine.

2.6.11. Set the number of amplification cycles determined in step 2.6.9.

2.6.12. Typically, 10 ng of cDNA is sufficient to obtain 20-40 ng of DNA library after 13-14 cycles of amplification. Table 2 shows the approximate amount of amplification cycles and the expected library yield.

Tagmented cDNA, ng	# PCR cycles	Expected library yield, ng
5	14-15	
10	13-14	20-40
20	11-12	

**Table 2** Expected yield of BRB-seq libraries from different amounts of tagmented cDNA

## Indexed cDNA library clean-up with SPRI beads

Purify the final cDNA library with SPRI magnetic beads using a 0.7x ratio (35  $\mu$ L of bead slurry for 50  $\mu$ L cDNA library).

**NOTE:** Use pre-warmed beads and vortex them vigorously before pipetting.

2.6.13. Adjust the library volume to 50  $\mu$ L with water.

2.6.14. Add 35  $\mu$ L of beads and mix by pipetting up and down 10 times.

2.6.15. Incubate for 5 min at room temperature.

2.6.16. Place the tubes on the magnetic stand, wait 5 min, carefully remove, and discard the supernatant.

2.6.17. To wash the beads, pipette 200  $\mu$ L of freshly prepared 80% ethanol into the tube.

2.6.18. Incubate for 30 sec.

2.6.19. Carefully remove the ethanol without touching the bead pellet.

2.6.20. Repeat step 2.6.17 for a total of two washes.

2.6.21. Remove the tube from the magnetic stand and let the beads dry for 1-2 min.

2.6.22. Resuspend the beads in 21  $\mu$ L of water.

- 2.6.23. Incubate for 1 min.
- 2.6.24. Place the tube on the magnetic stand, wait 5 minutes, and carefully remove 20  $\mu$ L of supernatant into a new tube to avoid bead carry-over.
- 2.6.25. Perform the bead clean-up once again by repeating the procedure from step 2.6.13.

**Safe stop:** At this step, the cDNA libraries can be safely kept at  $-20^{\circ}\text{C}$  for a few weeks.

## 2.7. Library quality control

### Pooled library quality control

Before sequencing, the libraries should be subjected to fragment analysis (with Fragment analyzer, Bioanalyzer, or TapeStation) and quantification (with Qubit). This information is required to assess the molarity of the libraries and prepare the appropriate library dilution for sequencing. A successful library contains fragments in the range of 300 – 1000 bp with a peak at 600-800 bp (Figure 3) shows an example of a good human blood RNA BRB-seq library profile prepared with hGBR.

Library prepared with total human blood RNA without globin depletion demonstrates sharp spikes, representing abundant fragments (Figure 4).

Importantly, libraries with primer dimer peaks at 180 bp and ranging at 250 – 290 bp will likely produce lower-quality sequencing data with a reduced proportion of mappable reads (Figure 5). Therefore, it is strongly recommended to remove those peaks by performing an additional round of SPRI beads purification with the 0.7x ratio (see step 2.6.13).

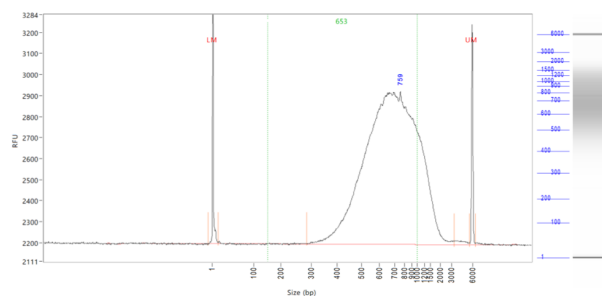
Undertagged libraries have a broader fragment range distribution with a peak at 1000-1200 bp (Figure 6). Only a fraction of such libraries contains fragments that can be efficiently sequenced; therefore, for the best results, it is recommended to re-tagment the cDNA.

Library quantification can also be done unbiasedly by qPCR using standard Illumina library quantification kits (i.e., KAPA HiFi, Roche).

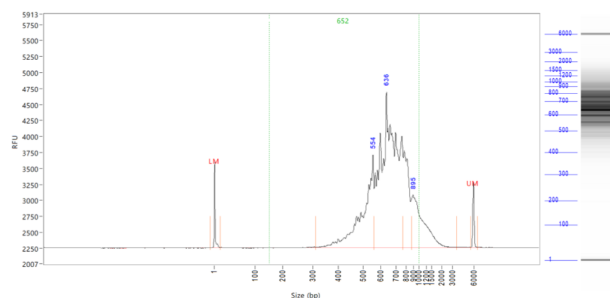
Pre-sequencing library QC:

- Use 2  $\mu$ L of the library to measure the concentration with Qubit.
- Use 2  $\mu$ L of the library to assess the profile with the Fragment Analyzer instrument or similar.
- If necessary, re-purify the libraries by following steps 2.6.13 – 2.6.24 to remove the peaks <300 bp.

**Figure 3** A successful library profile prepared with blood RNA samples using hGBR that resulted in proper globin transcripts depletion

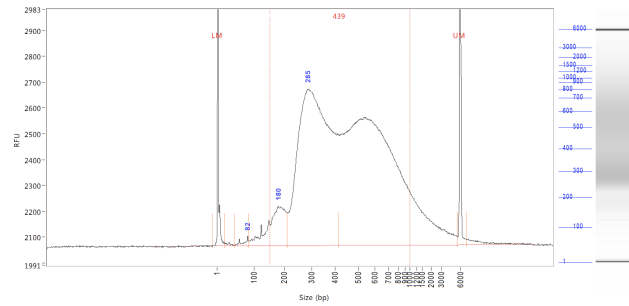


**Figure 4** An example of library profile prepared with non-depleted human blood RNA demonstrating typical spikes attributed to globin fragments

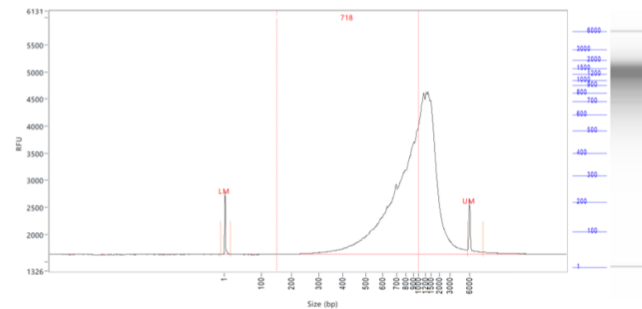




**Figure 5** An example of an over-tagmented library profile with a peak at 290 bp and an adapter peak at 160 bp



**Figure 6** An example of an under-tagmented library profile with a major peak > 1000 bp



## Assessing uniformity of read distribution across the samples

For projects involving highly heterogeneous RNA samples, it is recommended to validate the uniformity of read coverage across the samples by shallow library sequencing (see step 2.2). This approach ensures that every sample will obtain enough reads required for the analysis. BRB-seq libraries can be added as spike-ins to the compatible sequencing run (see Part 3). For this validation 0.5-1M sequencing reads per library is sufficient to assess the fraction of reads attributed to every sample.

## Part 3. LIBRARY SEQUENCING

The libraries prepared with the MERCURIUS™ BRB-seq kit carry Illumina- and AVITI-compatible adapter sequences. They can be processed on any Illumina instrument (e.g., HiSeq, NextSeq, MiSeq, iSeq, and NovaSeq) or in the Element AVITI System with Adept Workflow.

The MERCURIUS™ BRB-seq libraries are Unique Dual-Indexed and can potentially be pooled in a sequencing run with other libraries if the sequencing structure is compatible. Please refer to [Table 3](#) for the optimal sequencing structure and [Table 4](#) for the list of i5 and i7 index sequences.

Given the BRB-seq library structure, the optimal number of cycles for Read 1 is 28 (and 29 for AVITI). The following cycles, 29-60, will cover the homopolymer sequence, which may result in a significant drop of Q30 values reflecting sequencing quality. Therefore, using standard Illumina or AVITI runs setups (e.g., 100 PE or 150 PE) is not recommended.

Read	Length (cycles)		Comment
	for Illumina	for AVITI	
Read 1	28	29	Sample barcode (14 nt) and UMI (14 nt); +1 extra base for AVITI
Index 1 (i7) read	8	8	Library Index
Index 2 (i5) read	8*	8*	Library Index (*optional and valid for UDI libraries)
Read 2	60-90	101	Gene fragment

**Table 3** Sequencing structure of BRB-seq libraries

The Unique Dual Indexing (UDI) strategy ensures the highest library sequencing and demultiplexing accuracy and complies with the best practices for Illumina sequencing platforms. UD-indexed libraries have distinct index adapters for i7 and i5 index reads ([Table 4](#)).

Name	Type	i7 index sequence	i5 index sequence Forward Workflow	i5 index sequence Reverse Workflow
<b>MQ.UDI.1</b>	UDI (i7/i5)	TAAGGCCGA	TATAGCCT	AGGCTATA
<b>MQ.UDI.2</b>	UDI (i7/i5)	CGTACTAG	ATAGAGGC	GCCTCTAT
<b>MQ.UDI.3</b>	UDI (i7/i5)	AGGCAGAA	CCTATCCT	AGGATAGG
<b>MQ.UDI.4</b>	UDI (i7/i5)	GCGTTGGA	TTGGACTT	AAGTCCAA

**Table 4** UDI adapter sequences

**NOTE:** Sequencing depth

1. The recommended sequencing depth is 1-5 Mio reads per sample. Deeper sequencing can also be performed to detect very lowly expressed genes.
2. If only one library is sequenced in a flow cell, the Index reads can be skipped.
3. The loading molarity for the library depends on the type of sequencing instrument (see 3.1 and 3.2) and should be discussed with the sequencing facility or an experienced person.

### 3.1. Sequencing with Illumina instruments

The loading concentration for the Illumina instruments is indicated in [Table 5](#). Please refer to [Appendix 1](#) for the list of Illumina instruments with forward or reverse workflow.

Instrument	Final loading concentration	PhiX
MiSeq	20 pM	1 %
iSeq	100 pM	1 %
NextSeq 500/550/550Dx	2.2 pM	1 %
NextSeq 2000, manual denature	85 pM	1%
NextSeq 2000, onboard denature	850 pM	1%
NovaSeq Standard Workflow*	160 pM	1 %
NovaSeq XP Workflow	100 pM	1 %
HiSeq4000	270 pM	1 %

\* - adjusted molarity for BRB-libraries sequencing. We recommend a prior dilution of the libraries to 0.8 nM before denaturation.

**Table 5** Reference loading concentrations for various Illumina instruments

### 3.2. Sequencing with Element AVITI instrument

For the most optimal results, the MERCURIUS™ BRB-seq libraries can be sequenced with the Element Biosciences AVITI System using Cloudbreak AVITI 2x75 High Output sequencing kits (#860-00004).

Libraries must be converted with the Adept PCR-Plus module (#830-00018) for linear loading (Table 6).

Type	Loading molarity, pM	Library starting amount for denaturation, nM	PhiX control	PhiX, %
Cloudbreak	14	1*	PhiX Control Library, Adept	2 %

\* - requires 4nM of library before conversion

**Table 6** Loading concentration for Cloudbreak AVITI 2x75 High Output sequencing kit.

**NOTE:** Sequencing depth

Please note that the **Cloudbreak AVITI 2x75 High Output sequencing** yields 1'000 Mio reads. Therefore, for the 384-sample library, the sequence depths would be limited to a maximum of 2.5 Mio reads/sample.

## Part 4. SEQUENCING DATA PROCESSING

Following Illumina sequencing and standard library index demultiplexing, the user obtains raw read1 and read2 *fastq* sequencing files (e.g., *mylibrary\_R1.fastq.gz* and *mylibrary\_R2.fastq.gz*).

This section explains how to generate ready-for-analysis gene, and UMI read count matrices from raw *fastq* files.

To obtain the data ready for analysis, the user needs to align the sequencing reads to the genome and perform the gene/UMI read count generation, which can be done in parallel with the sample demultiplexing.

For manual data processing, the user requires a terminal and a server or powerful computer with an installed set of standard bioinformatic tools.

### 4.1. Required software

- [fastQC](#) (version v0.11.9 or greater). Software for QC of *fastq* or *bam* files. This software is used to assess the quality of the sequencing reads, such as the number of duplicates, adapter contamination, repetitive sequence contamination, and GC content. The software is freely available from <https://www.bioinformatics.babraham.ac.uk/projects/fastqc/>. The website also contains informative examples of [good](#) and poor-quality data.
- [STARsolo](#) from STAR (version 2.7.9a). Software for read alignment on reference genome (Dobin et al., 2013). It can be downloaded from [Github](#) (<https://github.com/alexdobin/STAR>). STAR can only be run on UNIX systems and requires:
  - x86-64 compatible processors
  - 64-bit Linux or Mac OS X.
  - ~30-40Gb of RAM
- [FastReadCounter](#) (v.1.1 or greater). Software for counting genome-aligned reads for genomic features. [github.com/DeplanckeLab/FastReadCounter](https://github.com/DeplanckeLab/FastReadCounter)
- [Picard](#) (v.2.17.8 or greater) and [Samtools](#) (v.1.9 or greater). Collections of command-line utilities to manipulate with BAM files. Note: Picard requires [Java version 8 or higher](#) to be installed.
- R Software (version 3 or greater).
- (Optional) [BRBseqTools](#) (version 1.6). The software suite for processing BRB-seq libraries is available at <https://github.com/DeplanckeLab/BRB-seqTools>.

### 4.2. Data processing

#### 4.2.1. Merging *fastq* files from individual lanes and/or libraries (Optional)

- 4.2.1.1 Depending on the type of instrument used for sequencing, one or multiple R1/R2 *fastq* files per library may result from individual lanes of a flow cell. The *fastq* files from individual lanes should be merged into single *R1.fastq* and single *R2.fastq* files to simplify the following steps. This is an example of *fastq* files obtained from HiSeq 4 lane sequencing:

```
> mylibrary_L001_R1.fastq.gz, mylibrary_L002_R1.fastq.gz,  
mylibrary_L003_R1.fastq.gz, mylibrary_L004_R1.fastq.gz  
> mylibrary_L001_R2.fastq.gz, mylibrary_L002_R2.fastq.gz,  
mylibrary_L003_R2.fastq.gz, mylibrary_L004_R2.fastq.gz
```

- 4.2.1.2 To merge the *fastq* files from different lanes, use a `cat` command in a terminal. This will generate two files: *mylibrary\_R1.fastq.gz* and *mylibrary\_R2.fastq.gz*, containing the information of the entire library.

```
> cat mylibrary_L001_R1.fastq.gz mylibrary_L002_R1.fastq.gz  
mylibrary_L003_R1.fastq.gz mylibrary_L004_R1.fastq.gz >  
mylibrary_R1.fastq.gz  
> cat mylibrary_L001_R2.fastq.gz mylibrary_L002_R2.fastq.gz  
mylibrary_L003_R2.fastq.gz mylibrary_L004_R2.fastq.gz >  
mylibrary_R2.fastq.gz
```

- 4.2.1.3 Move these 2 *fastq* files into a new folder, which will be referenced in this manual as `$fastqfolder`.

**NOTE:** This step can also be done if you sequenced your library in multiple sequencing runs.

**Warning:** The order of merging files should be kept the same (for e.g., L001, L002, L003, L004, not L002, L001 ...) to avoid issues when demultiplexing the samples.

## 4.2.2. Sequencing data quality check

4.2.2.1 Run fastQC on both R1 and R2 fastq files. Use `--outdir` option to indicate the path to the output directory. This directory will contain HTML reports produced by the software.

```
> fastqc --outdir $QCdir/ mylibrary_R1.fastq.gz
> fastqc --outdir $QCdir/ mylibrary_R2.fastq.gz
```

4.2.2.2 Check fastQC reports to assess the quality of the samples (see Software and materials).

### NOTES:

- The report for the R1 *fastq* file may contain some "red flags" because it contains barcodes/UMIs. Still, it can provide useful information on the sequencing quality of the barcodes/UMIs.
- The main point of this step is to check the R2 *fastq* report. Of note, *per base sequence content* and *kmer content* are rarely green. If there is some *adapter contamination* or *overrepresented sequence* detected in the data, it may not be an issue (if the effect is limited to <10~20%). These are lost reads but most of them will be filtered out during the next step.

## 4.2.3. Preparing the reference genome

The *fastq* files must be aligned (or "mapped") on a reference genome. The [STAR](#) (Dobin et al., 2013<sup>1</sup>) aligner is one of the most efficient tools for RNA-seq reads mapping. It contains a "soft-clipping" tool that automatically cuts the beginning or the end of reads to improve the mapping efficiency, thus allowing the user to skip the step of trimming the reads for adapter contamination. Moreover, STAR has a mode called STARsolo, designed to align multiplexed data (such as BRB-seq) and directly generate count matrices.

The STAR aligner requires a genome assembly together with a genome index file. The index file generation is a time-consuming process that is only performed once on a given genome assembly so that it can be completed in advance and the index files can be stored on the server for subsequent analyses.

4.2.3.1 Download the correct genome assembly fasta file (e.g., `Homo_sapiens.GRCh38.dna.primary_assembly.fa`) and gene annotation file in gtf format (e.g., `Homo_sapiens.GRCh38.108.gtf`) from Ensembl or UCSC repository. Below is an example of a human assembly:

```
> wget https://ftp.ensembl.org/pub/release-108/fasta/homo_sapiens/dna/Homo_sapiens.GRCh38.dna.primary_assembly.fa.gz
> gzip -d Homo_sapiens.GRCh38.dna.primary_assembly.fa.gz # unzip
> wget https://ftp.ensembl.org/pub/release-108/gtf/homo_sapiens/Homo_sapiens.GRCh38.108.gtf.gz
> gzip -d Homo_sapiens.GRCh38.108.gtf.gz # unzip
```

**NOTE:** It's recommended to download the `primary_assembly` fasta file when possible (without the 'sm' or 'rm' tags). If not available, download the `top_level` assembly. For the *gtf*, download the one that does not have the 'chr' or 'abinitio' tags.

4.2.3.2 Use STAR to create an index for the genome assembly. Indicate the output folder name containing the index files using `--genomeDir` option:

```
> STAR --runMode genomeGenerate --genomeDir /path/to/genomeDir --
genomeFastaFiles Homo_sapiens.GRCh38.dna.primary_assembly.fa --sjdbGTFfile
Homo_sapiens.GRCh38.108.gtf --runThreadN 8
```

### NOTES:

- The `--runThreadN` parameter can be modified depending on the number of cores available on your machine. The larger this number is, the more parallelized/fast the indexing will be.

<sup>1</sup> Alexander Dobin, Carrie A. Davis, Felix Schlesinger, Jorg Drenkow, Chris Zaleski, Sonali Jha, Philippe Batut, Mark Chaisson, Thomas R. Gingeras, STAR: ultrafast universal RNA-seq aligner, *Bioinformatics*, Volume 29, Issue 1, January 2013, Pages 15–21, <https://doi.org/10.1093/bioinformatics/bts635>

- STAR can use up to 32-40Gb of RAM depending on the genome assembly. So, you should use a machine that has this RAM capacity.

#### 4.2.4. Aligning to the reference genome and generation of count matrices

After the genome index is created, both R1 and R2 *fastq* files can be aligned to this reference genome. For this step, use the “solo” mode of STAR, which not only aligns the reads to the reference genome but also creates the gene read count and UMI (unique molecular identifier) count matrices.

The following parameters should be adjusted according to the sequencing information:

- `--soloCBwhitelist`: a text file with the list of barcodes (one barcode sequence per lane) which is used by STAR for demultiplexing. This file is provided according to the version of the MERCURIUS™ kit used. Example of “[barcodes\\_96\\_V5D\\_star.txt](#)”:

```
> TACGTTATTCCGAA
> AACAGGATAACTCC
> ACTCAGGCACCTCC
> ACGAGCAGATGCAG
```

- `--soloCBstart`: Start position of the barcode in the R1 *fastq* file, equal to 1.
- `--soloCBlen`: Length of the barcode. This value should match the length of the barcode sequence in the file specified by `--soloCBwhitelist`. The length of the barcode depends on the version of the oligo-dT barcodes provided in the kit. For the barcode plate set V5, the default value is 14.
- `--soloUMIstart`: Start position of the UMI, it's `soloCBlen + 1` since the UMI starts right after the barcode sequence.
- `--soloUMIlen`: The length of UMI. This parameter depends on the version of the oligo-dT barcodes in the kit and the number of sequencing cycles performed for Read1. For the barcode plate set V5 the default value is 14.
- `--readFilesIn`: name and path to the input *fastq* files.

The order of the *fastq* files provided in the script is important. The first *fastq* must contain genomic information, while the second the barcode and UMI content. Thus, files should be provided for STARsolo in the following order: `--readFilesIn mylibrary_R2 mylibrary_R1`.

- `--genomeDir`: a path to the genome indices directory generated before (`$genomeDir`).

Output count matrix parameters:

By default, STARsolo produces a UMI count matrix, i.e., containing unique non-duplicated reads per sample for each gene. This type of count data is a standard for single-cell RNA-seq analysis. For bulk RNA-seq analysis, a gene read count matrix is usually used. The following parameters will enable the generation of the output of interest.

`--soloUMI dedup NoDedup`, will generate a read count matrix output

`--soloUMI dedup NoDedup 1MM_Directional`, will generate both UMI and read count matrices in `mtx` format.

This step will output *bam* files and count matrices in the folder `$bamdir`.

```
> STAR --runMode alignReads --outSAMmapqUnique 60 --runThreadN 8 --
outSAMunmapped Within --soloStrand Forward --quantMode GeneCounts --
outBAMsortingThreadN 8 --genomeDir $genomeDir --soloType CB_UMI_Simple --
soloCBstart 1 --soloCBlen 14 --soloUMIstart 15 --soloUMIlen 14 --
soloUMI dedup NoDedup 1MM_Directional --soloCellFilter None --soloCBwhitelist
barcodes.txt --soloBarcodeReadLength 0 --soloFeatures Gene --
outSAMattributes NH HI nM AS CR UR CB UB GX GN sS sQ sM --
outFilterMultimapNmax 1 --readFilesCommand zcat --outSAMtype BAM
SortedByCoordinate --outFileNamePrefix $bamdir --readFilesIn
mylibrary_R2.fastq.gz mylibrary_R1.fastq.gz
```

The demultiplexing statistics can be found in the “`bamdir/Solo.out/Barcodes.stats`” file.

The alignment quality and performance metrics can be found in the “`bamdir/Log.final.out`” file.

**NOTE:** The most important statistic at this step is the proportion of “Uniquely mapped reads” which is expected to be greater than 70% (for human, mouse, or drosophila).

#### 4.2.5. Generating the count matrix from .mtx file

STARsolo will generate a count matrix (*matrix.mtx* file) located in the *bamdir/Solo.out/Gene/raw* folder. This file is a sparse matrix format that can be transformed into a standard count matrix using an R script provided below:

```
> #Myscript.R
> library(data.table)
> library(Matrix)
> matrix_dir <- "$bamdir/Solo.out/Gene/raw"
> f <- file(paste0(matrix_dir, "matrix.mtx"), "r")
> mat <- as.data.frame(as.matrix(readMM(f)))
> close(f)
> feature.names = fread(paste0(matrix_dir, "features.tsv"), header = FALSE,
stringsAsFactors = FALSE, data.table = F)
> barcode.names = fread(paste0(matrix_dir, "barcodes.tsv"), header = FALSE,
stringsAsFactors = FALSE, data.table = F)
> colnames(mat) <- barcode.names$V1
> rownames(mat) <- feature.names$V1
> fwrite(mat, file = umi.counts.txt, sep = "\t", quote = F, row.names = T,
col.names = T)
```

The resulting UMI/gene count matrix can be used for a standard expression analysis following conventional bioinformatic tools.

#### 4.2.6. Generating the read count matrix with per-sample stats (Optional)

Given a multiplex BAM file obtained with STARsolo and a set of barcodes, the software FastReadCounter produces a read count matrix with per-sample statistics with the following code:

```
> #!/bin/bash
>
> gtf_file=homo_sapience.gtf          ### GTF genome annotation file
> output_folder=counts/              ### Name of the final count output file
> bam_dir=myspath/bam_demult         ### Directory with demultiplexed bam
files
> barcode_file=V5D_96_frc.txt       ### Barcode reference file
>
> FastReadCounter-1.0.jar" --bam ${bam_dir}/${bam_dir}.bam \
>                               --gtf "${gtf_file}" \
>                               --umi-dedup none \
>                               --barcodeFile ${barcode_file} \
>                               -o ${output_folder}
```

The resulting read count matrices can be used for subsequent gene expression analysis using established pipelines and tools.

**NOTE:** Please contact us at [info@alitheagenomics.com](mailto:info@alitheagenomics.com) in case you don't have the barcode sequences (in your email, please indicate the name of the barcode set and the PN of the barcode module).

#### 4.2.7. Demultiplexing bam files (Optional)

Generation of demultiplexed bam files, i.e., individual bam files for each sample, might be needed in some cases, for example, for submitting the raw data to an online repository that does not accept multiplexed data (for example, GEO or ArrayExpress), or for running an established bulk RNA-seq data analysis pipeline.

For this purpose, the Picard tool can be used with the following parameters:

- `$out_dir`, The output directory for demultiplexed bam files
- `$path_to_bam`, the path to multiplexed single bam file
- `$barcode_brb.txt`, tab-delimited file containing 2 columns: `sample_id` and barcode seq. Example of [barcode\\_96\\_V5D\\_brb.txt](#):

```
> Sample1      TACGTTATTCCGAA
> Sample2      AACAGGATAACTCC
> Sample3      ACTCAGGCACCTCC
```

```
> Sample4      ACGAGCAGATGCAG
```

**NOTE:** This file is different from the list of barcode files provided to STAR.

Run the following Picard script:

```
> #!/bin/bash
> demultiplexed_bam_out_dir=$out_dir
> input_bam=$path_to_bam
> barcode_info=$barcode_brb.txt
>
> while IFS=$'\t' read -r -a line
> do
>     sample_id="${line[0]}"
>     tag_value="${line[1]}"
>
>     java -jar /path/to/picard.jar FilterSamReads \
>         I=${input_bam} \
>         O=${demultiplexed_bam_out_dir}/${sample_id}.bam \
>         TAG=CR TAG_VALUE=${tag_value} \
>         FILTER=includeTagValues
> done < "$barcode_info"
```

**NOTE:** Please contact us at [info@alitheagenomics.com](mailto:info@alitheagenomics.com) in case you don't have the barcode sequences (in your email, please indicate the name of the barcode set and the PN of the barcode module).



## Appendix 1. Compatible Illumina instruments

Illumina instruments can use two workflows for sequencing i5 index (see the details in [Indexed Sequencing Overview Guide](#) on Illumina's website).

Forward strand workflow instruments:

- NovaSeq 6000 with v1.5 reagents
- MiSeq with Rapid reagents
- HiSeq 2500, HiSeq 2000

Reverse strand workflow instruments:

- NovaSeq 6000 with v1.5 reagents
- iSeq 100
- MiniSeq with Standard reagents
- NextSeq
- HiSeq X, HiSeq 4000, HiSeq 3000

---

## Contact information

**Alithea Genomics SA**

Route de la Corniche 8

1066 Épalinges

Switzerland

Tel: +41 78 830 31 39

[www.alitheagenomics.com](http://www.alitheagenomics.com)[info@alitheagenomics.com](mailto:info@alitheagenomics.com)